

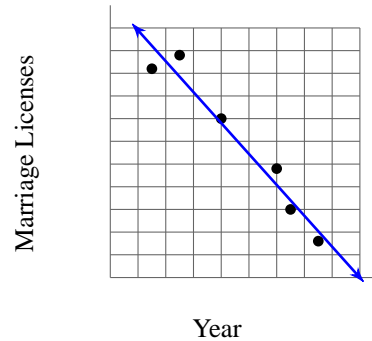
9) Ashley collects coins. Over a three-year period she collected 1,000 nickels. After organizing them by year, she found that the number of nickels from a given year was related to the number minted that year:



- 11) The number of marriage licenses issued by Clark County Nevada, the county where Las Vegas is located, has been decreasing since the year 2000:

Year	Marriage Licenses
2001	136,000
2003	139,000
2006	125,000
2010	114,000
2011	105,000
2013	98,000

This can be modeled by the equation $y = -10,000x + 140,000$ where x is the year and y is the number of marriage licenses issued.



- a) What does the y-intercept of this function represent?
- b) According to the model, how many marriage licenses were issued in 2008? Round your answer to the nearest hundred.

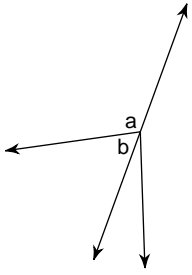
- 12) John collects coins. Over a three-year period he collected 1,000 nickels. After organizing them by year, he found that the number of nickels from a given year was related to the number minted that year:

Minted (100 mill.)	In Sample
4.2	7
8	15
12	22
13.3	31
14.8	21
17.6	24

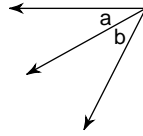
John discovered that this can be modeled by the equation $y = 1,000x - 1,000$

Name the relationship: complementary, supplementary, vertical, or adjacent.

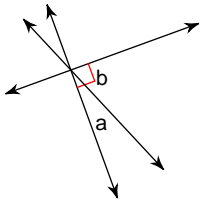
42)



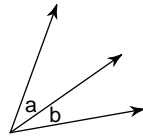
43)



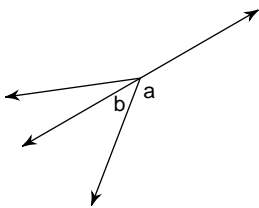
44)



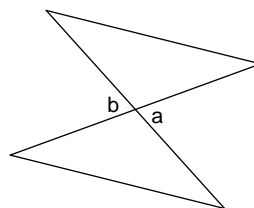
45)



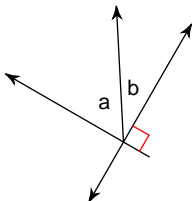
46)



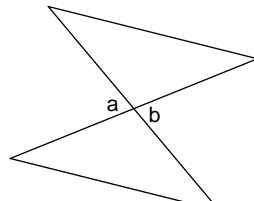
47)



48)



49)





77)

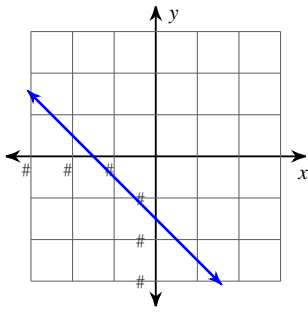
City	Population
Miami	399,457

City	Population
Irvine	

City	Population
------	------------

City	Population
------	------------

102)



103)

